



# geos Homes

## Sonnenvilla

- 3 Bedroom, 2.5 Bath
- 2,135 Total finished gross square feet (GSF)
- 533 GSF Ground Level
- 1,089 GSF Second Level
- 513 GSF Third Level
- Attached two-car garage
- Alternate plan available with elevator

Base Model:  
\$440,000 - \$465,000





geos

## Sonnenvilla

The largest of the homes in Phase One at approximately 2,100 square feet, this three-story, single-family home also offers an inviting live/work opportunity.

The ground floor in this updated version of the corner store with living space above is best outfitted as office space, storage, a bedroom suite or guest quarters.

The home also features a two-car attached garage. Levels two and three provide a sun-flooded living space with a great room, large open kitchen, three bedrooms and two baths.

A third floor with a master suite, sitting area and balcony with mountain views top this urban style live/work tower.





geos

Sonnenvilla



geos

Sonnenvilla

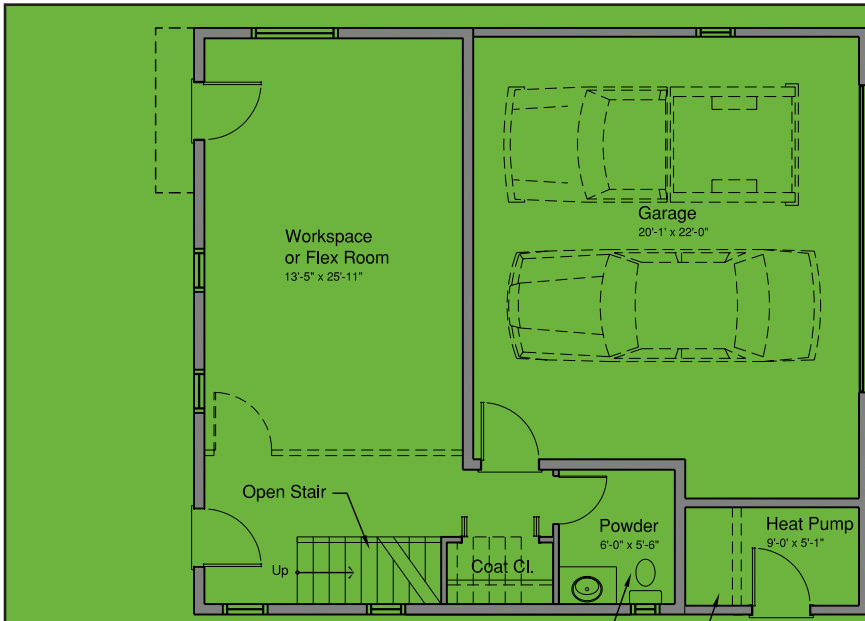




geos

# Sonnenvilla

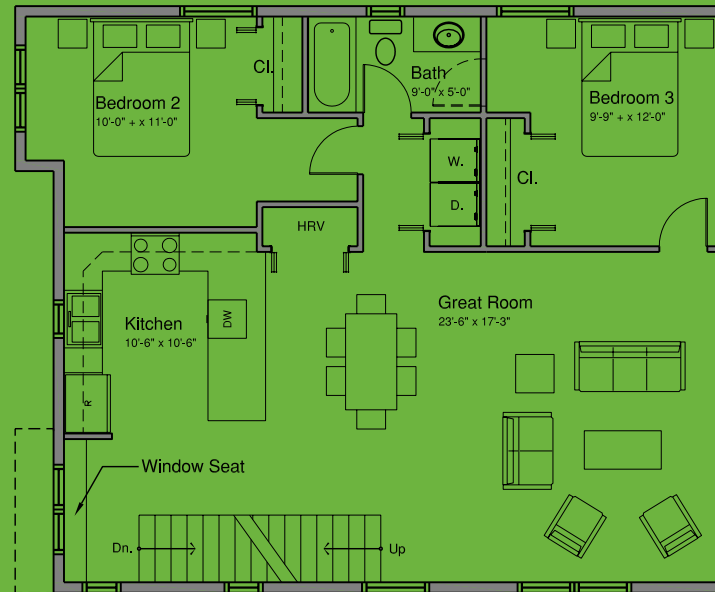




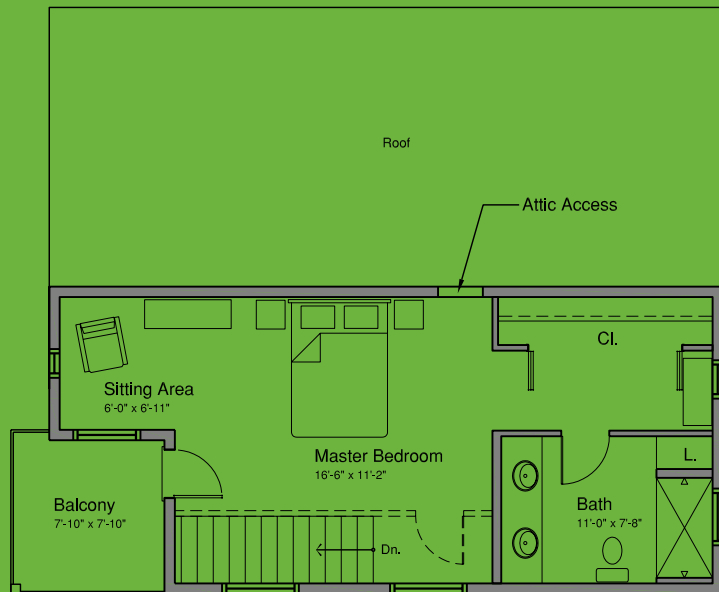
Plumbing Can Be Roughed In Only

Future Tub Or Shower

Level 1 Floor Plan  
1" = 10'



Level 2 Floor Plan  
1" = 10'



Level 3 Floor Plan  
1" = 10'



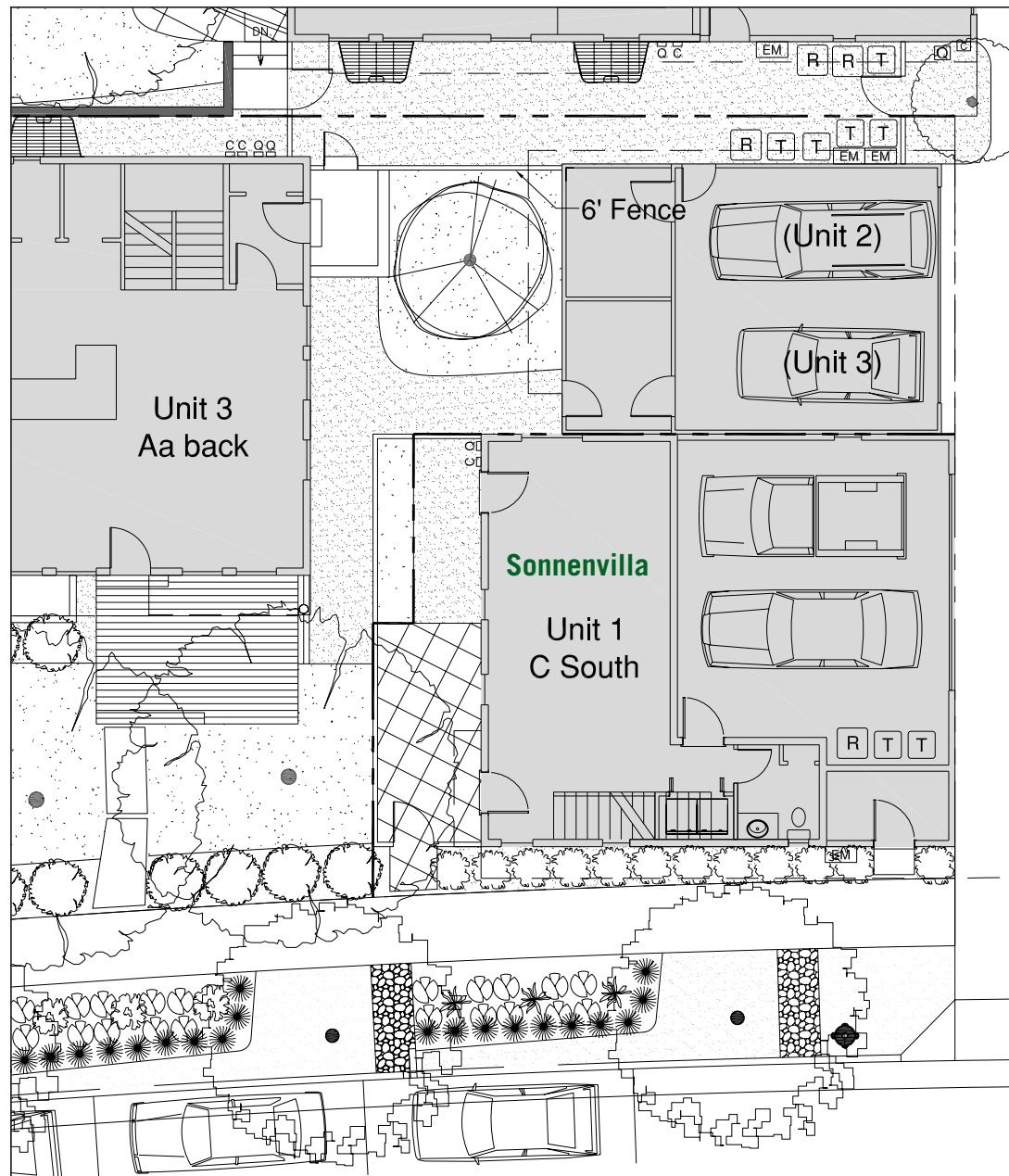
Floor Plans

Sonnenvilla



The Developer reserves the right to make any modifications that the Developer deems necessary. All dimensions and areas shown on this plan are approximate and not to scale. "As built" dimensions and areas may vary from these shown.







# Sonnenvilla





Sonnenvilla

