




geos Homes

Live/Work Urban Double

- 1 Bedroom, 2 Bath
- 1,833 Total finished gross square feet (GSF)
- 861 GSF Ground Work Level
- 972 GSF Second Living Level
- 861 GSF Unfinished Basement
- Optional Extra 1 Bedroom at Ground Level
- Optional Extra 2 Bedroom, 1 Bath in Basement
- 200 sf of detached shared garage
- 84 sf storage room

Base Model:
\$375,000



geos

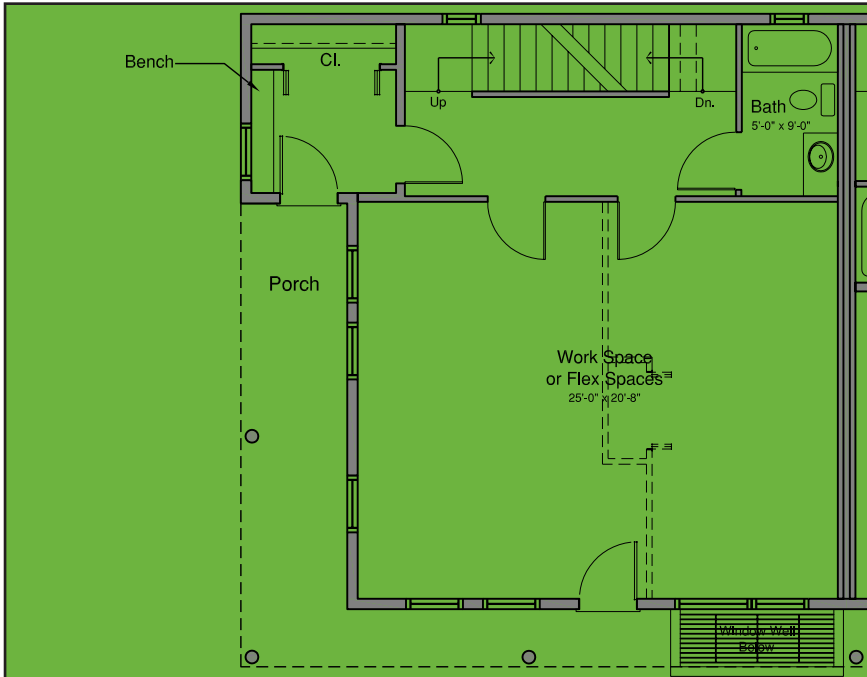
Live/Work Urban Double

Inspired by yesteryear's corner stores with living space above, homeowners just might trade in their car for their walking shoes when their commute is literally just steps away.

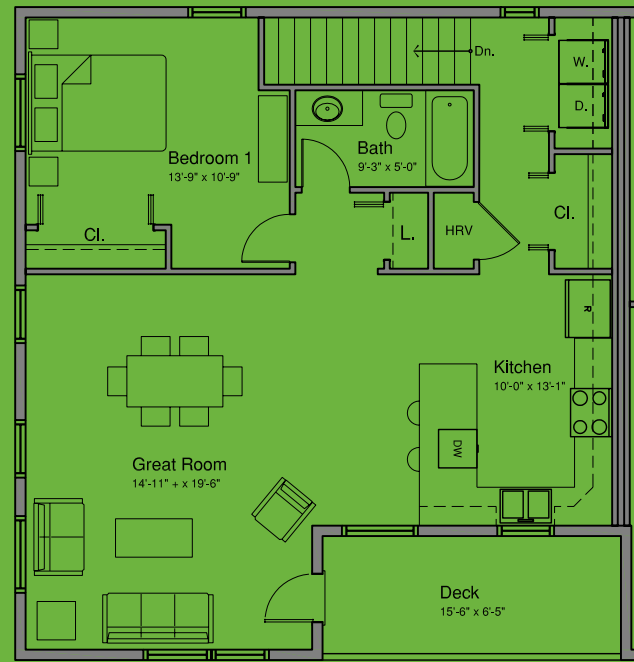
Set on a corner with highly visible street access, the 1,833-square-foot plan's flexible ground floor can be put to work as a yoga studio, an architect's office or used as extra living space. Upstairs in a sun-filled space, a great room, kitchen and master suite deliver all the comforts of home just a few energy-saving steps from the workspace.

A basement further expands the homeowner's options, with the ability to add two bedrooms and a bath. The work/live situation offers the benefits of fuel efficiency for residents and the environment.

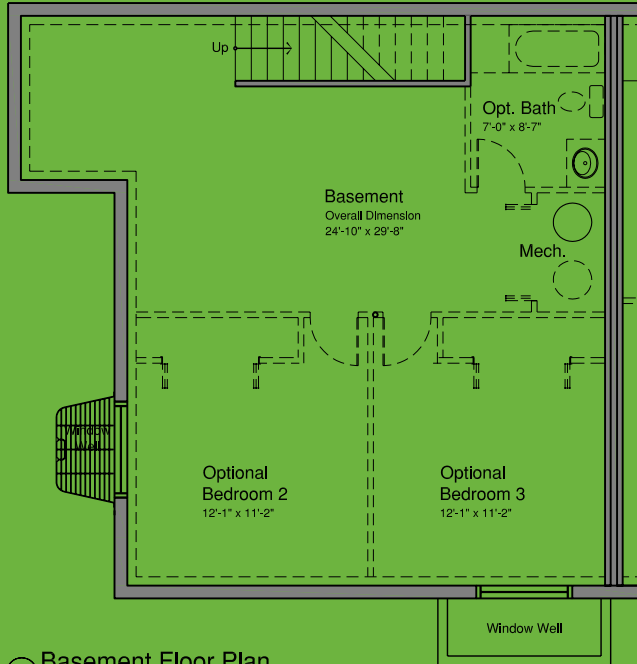




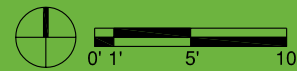
Level 1 Floor Plan
1" = 10'



Level 2 Floor Plan
1" = 10'



Basement Floor Plan
1" = 10'



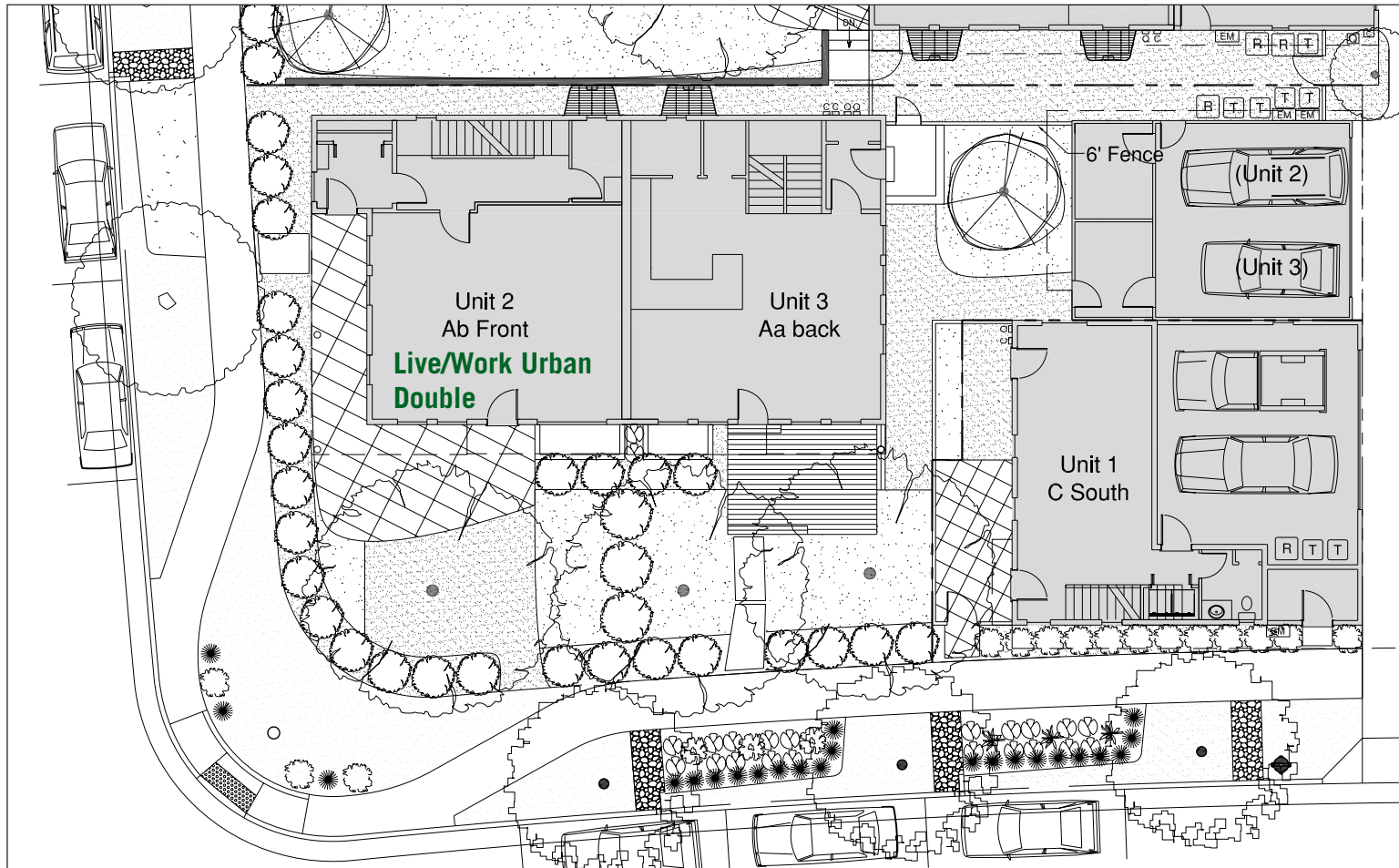
Floor Plans

Live/Work Urban Double



The Developer reserves the right to make any modifications that the Developer deems necessary. All dimensions and areas shown on this plan are approximate and not to scale. "As built" dimensions and areas may vary from these shown.







Live/Work
Urban Double





Live/Work
Urban Double

