




# geos Homes

## Streetside Urban Double

- 2 Bedroom, 2.5 Baths
- 1,833 Total finished gross square feet (GSF)
- 861 GSF Ground Level
- 972 GSF Second Level
- 861 GSF Unfinished Basement
- Optional extra 2 Bedroom, 1 Bath in Basement
- 240 sf one-car detached garage
- Optional Elevator

Base Model:  
\$399,000





geos

## Streetside Urban Double

These two-story floor plans live large thanks to an open floor plan, expansive windows and optional basement build-out. One model includes roughly 1,633 square feet of space, while the other offers 1,833 square feet, with room for an elevator if desired.

Both floor plans feature two bedrooms on the top floor, two-and-one-half baths and the ability to add two bedrooms and a bath in the basement. The ground floor opens to a south-facing yard, incorporating the charm reminiscent of a quaint European garden.

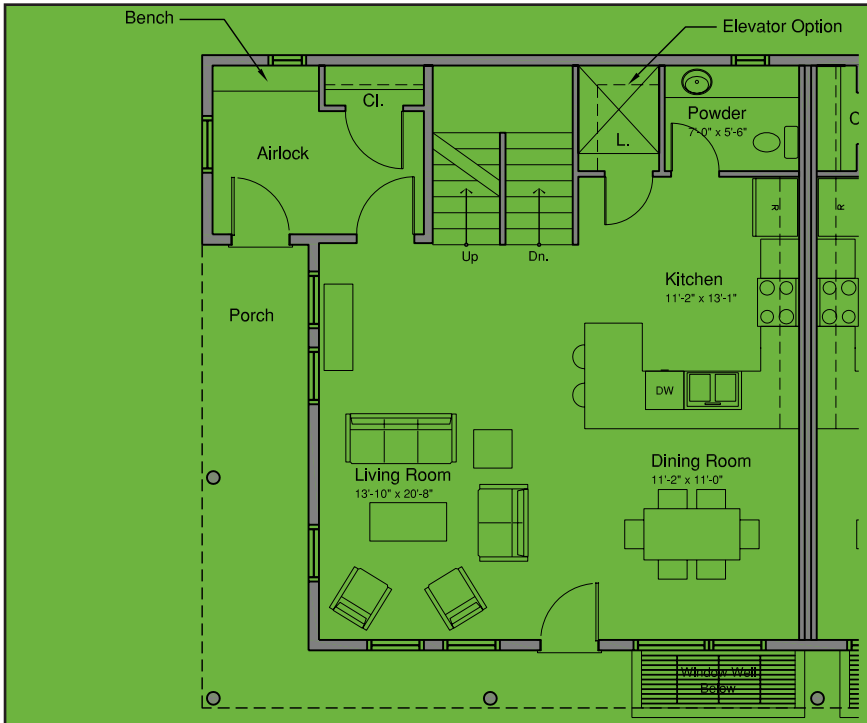
In all, the two-story is the perfect option for singles, young couples or the empty nester looking for the convenience of a low-maintenance yard.



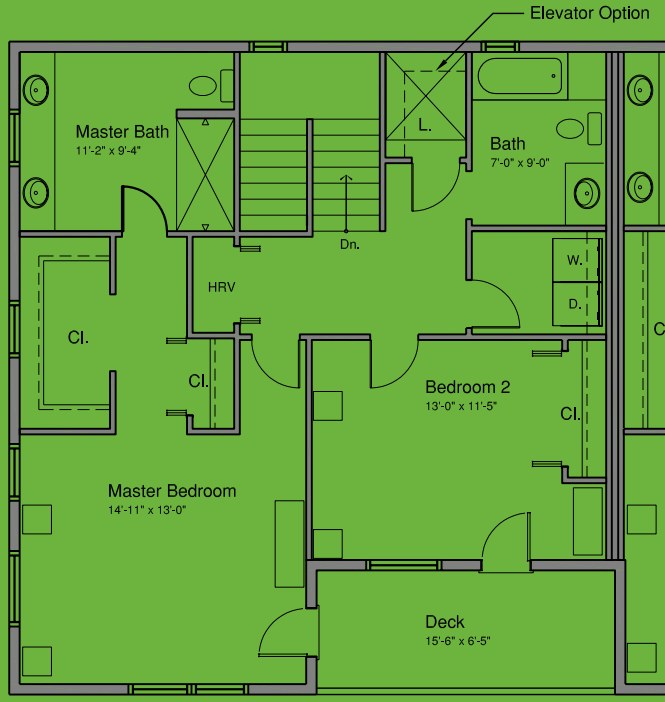


geos

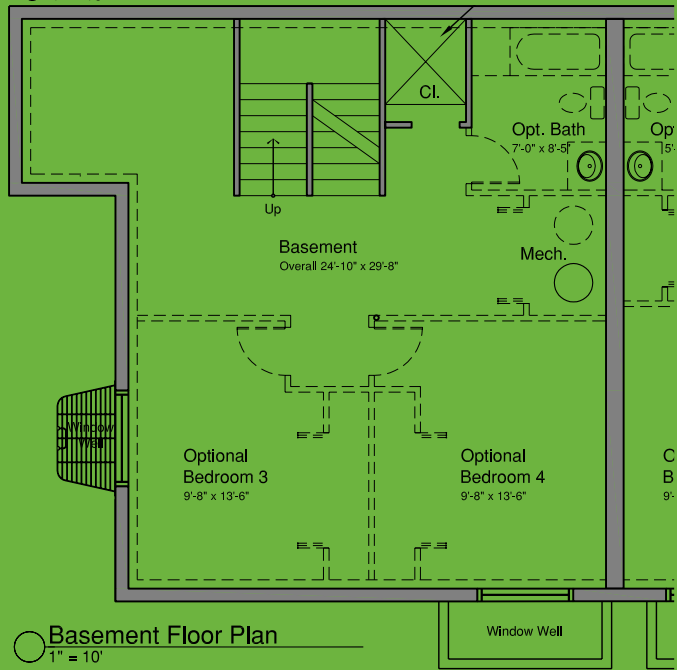
Streetside  
Urban Double



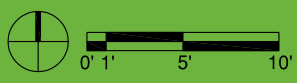
Level 1 Floor Plan  
1" = 10'



Level 2 Floor Plan  
1" = 10'



Basement Floor Plan  
1" = 10'

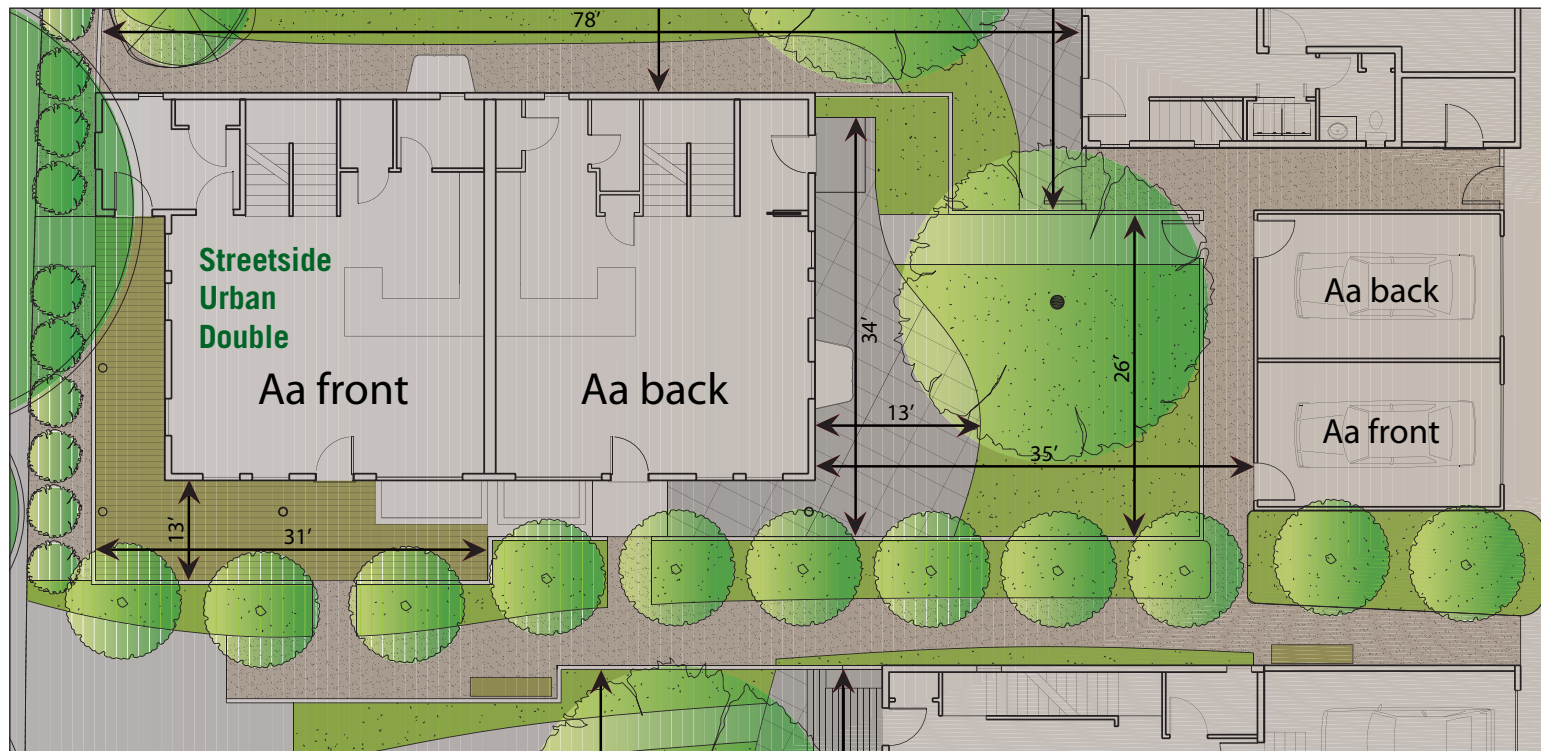


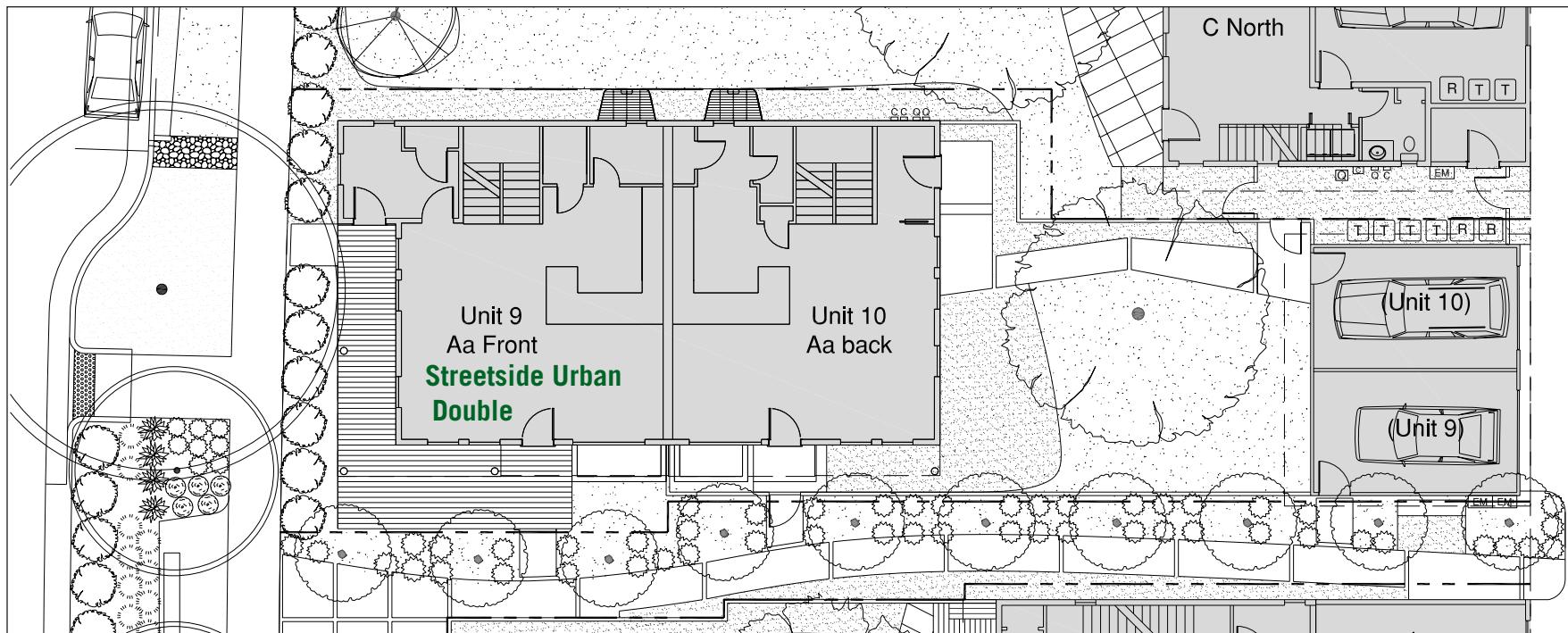
Floor Plans

Streetside  
Urban Double



The Developer reserves the right to make any modifications that the Developer deems necessary. All dimensions and areas shown on this plan are approximate and not to scale. "As built" dimensions and areas may vary from these shown.







Streetside  
Urban Double





Streetside  
Urban Double

