



geos Homes

Gardenside Urban Double

- 2 Bedroom, 2.5 Baths
- 1,613 Total finished gross square feet (GSF)
- 806 GSF Ground Level
- 807 GSF Second Level
- 806 GSF Unfinished Basement
- Optional extra 2 Bedroom, 1 Bath in Basement
- 240 sf one-car detached garage at Home 10
- 200 sf of shared detached garage at Home 3
- 84 sf storage room for Home 3

Base Model:
\$352,000





geos

Gardenside Urban Double

These two-story floor plans live large thanks to an open floor plan, expansive windows and optional basement build-out. One model includes roughly 1,633 square feet of space, while the other offers 1,833 square feet, with room for an elevator if desired.

Both floor plans feature two bedrooms on the top floor, two-and-one-half baths and the ability to add two bedrooms and a bath in the basement. The ground floor opens to a south-facing yard, incorporating the charm reminiscent of a quaint European garden.

In all, the two-story is the perfect option for singles, young couples or the empty nester looking for the convenience of a low-maintenance yard.





geos

Gardenside
Urban Double



geos

Gardenside
Urban Double

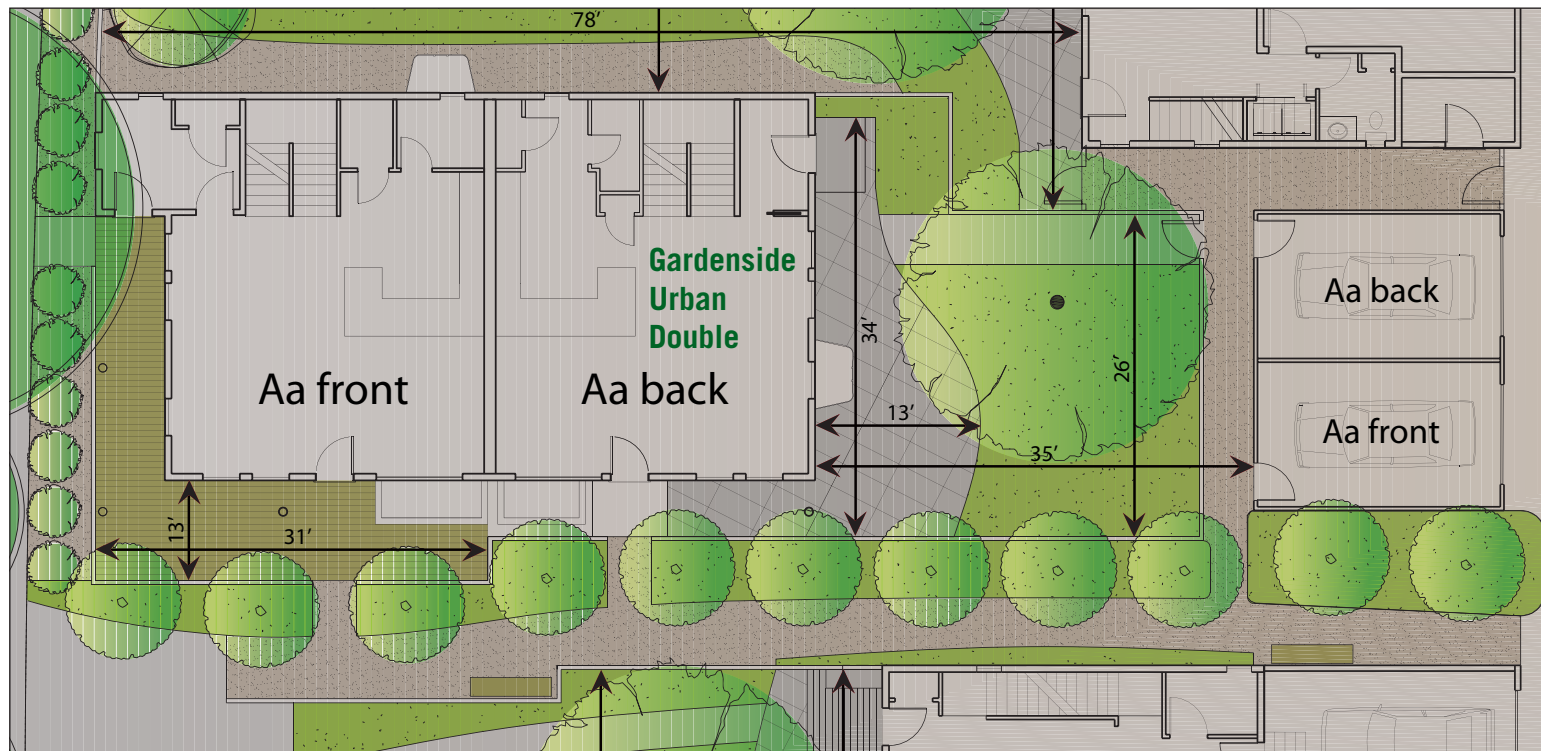


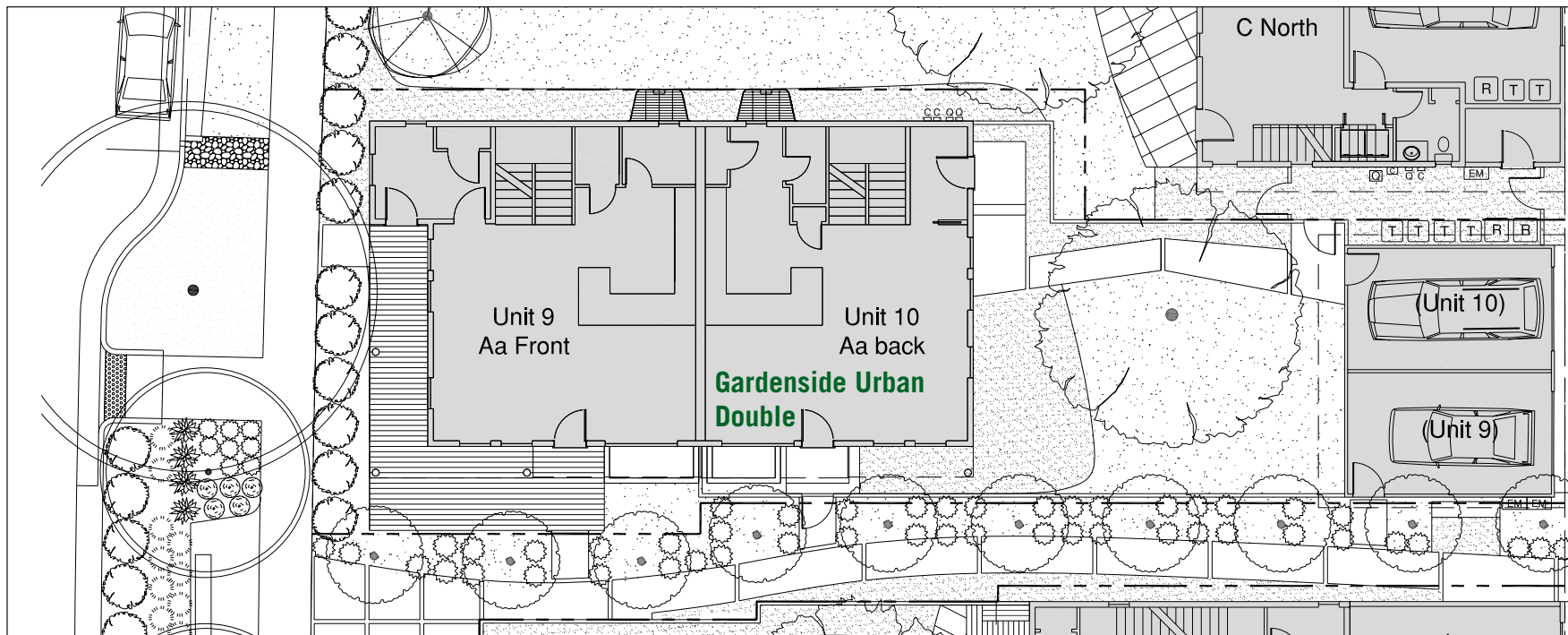


geos

Gardenside
Urban Double









Gardenside
Urban Double





Gardenside
Urban Double

